

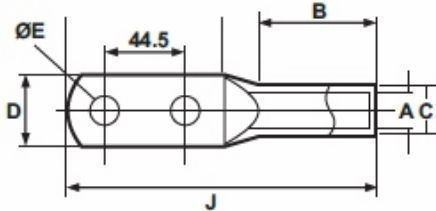


### COPPER CABLE LUGS 2 HOLE LONG PALM

MATERIAL : ELECTROLYTIC HIGH CONDUCTIVITY COPPER

FINISH : ELECTRO TINNED

FEATURES : WITH OR WITHOUT INSPECTION HOLE



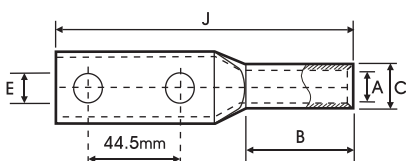
Product Ref.	Size mm <sup>2</sup>	Stud Hole E	Dimensions mm				
			A	C	D	B	J
HG2T-25:10	10.5	25	6.8	8.8	15	16	100
HG2T -35:10	10.5	35	8.2	10.6	16.5	16	100
HG2T-50:10	10.5	50	9.5	12.4	17	25	109
HG2T-50:12	13	50	9.5	12.4	17	25	109
HG2T-70:10	10.5	70	11.3	14.7	21	30	114
HG2T-70:12	13	70	11.3	14.7	21	30	114
HG2T-95:10	10.5	95	13.5	17.4	25	30	116
HG2T-95:12	13	95	13.5	17.4	25	30	116
HG2T-120:10	10.5	120	15	19.4	27.5	35	122
HG2T-120:12	13	120	15	19.4	27.5	35	122
HG2T-150:10	10.5	150	16.5	21.2	30	40	126
HG2T-150:12	13	150	16.5	21.2	30	40	126
HG2T-185:12	13	185	18.5	23.5	33.5	42	132
HG2T-240:12	13	240	21	26.5	38.5	50	143
HG2T-300:12	13	300	23.5	30.0	43	55	144
HG2T-400:12	13	400	28.5	36.5	52.5	60	149
HG2T-500:12	13	500	30.0	39.0	56	65	160
HG2T-630:12	13	630	35.0	45.0	60	75	160
HG2T-800:12	13	800	39.0	50.6	72	78	214
HG2T-1000:12	13	1000	43.0	56.2	78.5	90	220

### COPPER CABLE LUGS H V - 33 KV 2 HOLE LONG PALM

MATERIAL : E-COPPER

FINISH : ELECTRO TINNED

FEATURES : WITH OR WITHOUT INSPECTION HOLE



Product Ref.	Size mm <sup>2</sup>	Dimensions mm				
		E	A	C	B	J
HGVCT-25-2E10	25	10.5	6.8	10.0	38.0	123.0
HGVCT-35-2E10	35	10.5	8.2	12.5	37.0	124.0
HGVCT-50-2E12	50	13.0	9.5	14.5	34.0	124.0
HGVCT-70-2E12	70	13.0	11.0	16.0	36.0	126.0
HGVCT-95-2E12	95	13.0	13.5	19.0	46.0	138.5
HGVCT-120-2E12	120	13.0	15.0	20.5	52.0	144.5
HGVCT-150-2E12	150	13.0	16.5	23.0	49.0	144.5
HGVCT-185-2E14	185	15.0	17.0	23.5	49.0	148.5
HGVCT-240-2E14	240	15.0	19.2	25.5	53.0	152.5
HGVCT-300-2E16	300	17.0	23.5	32.0	46.0	154.5
HGVCT-400-2E16	400	17.0	27.0	38.0	69.0	182.5
HGVCT-500-2E20	500	21.0	30.3	41.0	76.0	194.5
HGVCT-630-2E20	630	21.0	33.4	43.0	88.0	206.5
HGVCT-1200-2E16	1200	17.0	47.0	61.0	130.0	230.0

(All Dimensions in mm)