

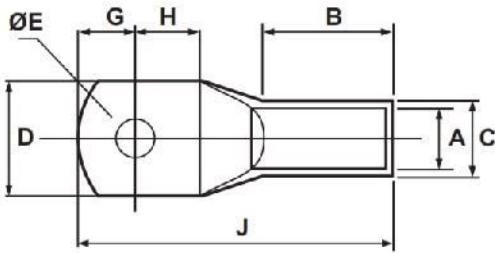
### COPPER CABLE LUGS: STANDARD TYPE

**Standard : BS 4579/IEC-61238-1:2003**

Material : Electrolytic High Conductivity Copper

Finish : Electro Tinned

Features : With or Without Inspection Hole



Product Ref.	Stud Hole E	Conductor Size mm <sup>2</sup>	Dimensions mm					
			A	C	D	G + H	B	J
HGSC 1.5:4	4.2	1.5	1.8	3.7	8	6	9	17
HGSC 1.5:5	5.2				8	6	9	17
HGSC 1.5:6	6.2				10	6	10	19
HGSC 2.5:4	4.2	2.5	2.4	4.0	8	8	9	19
HGSC 2.5:5	5.2				10	8	9	19
HGSC 2.5:6	6.2				10	8	11	21
HGSC 4:4	4.2	4	3.1	4.8	10	8	11	21
HGSC 4:5	5.2				10	8	11	21
HGSC 4:6	6.2				10	8	11	21
HGSC 6:5	5.2	6	3.8	5.5	10	10	11	24
HGSC 6:6	6.2				10	10	11	24
HGSC 6:8	8.5				12	10	12	28
HGSC 10:6	6.5	10	4.5	6.2	11	10	13	26
HGSC 10:8	8.5				12	10	15	28
HGSC 10:10	10.5				15	11	19	33
HGSC 16:6	6.5	16	5.4	7.1	12	12	14	31
HGSC 16:8	8.5				12	12	14	31
HGSC 16:10	10.5				15	12	20	36
HGSC 25:6	6.5	25	6.8	8.8	13	12	14	30
HGSC 25:8	8.5				13	12	14	30
HGSC 25:10	10.5				15	13	21	38
HGSC 35:6	6.2	35	8.2	10.6	16	14	18	38
HGSC 35:8	8.5				16	14	18	38
HGSC 35:10	10.5				16	14	18	38
HGSC 50:8	8.5	50	9.5	12.4	18	17	19	42
HGSC 50:10	10.5				18	17	19	42
HGSC 50:12	13.0				20	17	22	45
HGSC 70:8	8.5	70	11.3	14.6	21	19	22	47
HGSC 70:10	10.5				21	19	22	47
HGSC 70:12	13.0				21	19	22	47
HGSC 70:14	14.5				22	19	28	54

(All Dimensions in mm)

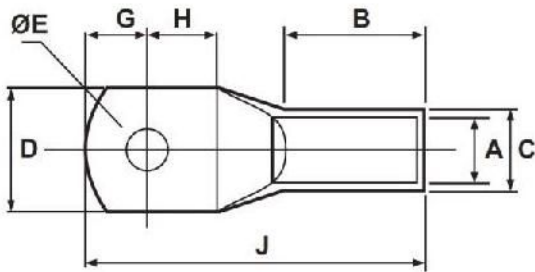
# COPPER CABLE LUGS: STANDARD TYPE

**Standard : BS 4579/IEC-61238-1:2003**

Material : Electrolytic High Conductivity Copper

Finish : Electro Tinned

Features : With or Without Inspection Hole



Product Ref.	Stud Hole E	Conductor Size mm <sup>2</sup>	Dimensions mm					
			A	C	D	G+H	B	J
HGSC 95: 10	10.5	95	13.5	17.4	25	25	21	53
HGSC 95: 12	13.0				25	27	21	53
HGSC 95: 14	14.5				25	29	22	55
HGSC 120: 10	10.5	120	15.0	19.4	28	27	23	60
HGSC 120: 12	13.0				28	27	23	60
HGSC 120: 14	14.5				28	27	23	60
HGSC 120: 16	17.0				28	32	23	64
HGSC 150: 10	10.5	150	16.5	21.2	30	32	27	70
HGSC 150: 12	13				30	32	27	70
HGSC 150: 14	14.5				30	32	27	70
HGSC 150: 16	17.0				30	32	27	70
HGSC 185: 10	10.5	185	18.5	23.5	34	36	32	80
HGSC 185:12	13				34	36	32	80
HGSC 185 14	14.5				34	36	32	80
HGSC 185: 16	17				34	36	32	80
HGSC 240: 12	13	240	21.0	26.5	38	40	37	94
HGSC 240: 14	14.5				38	40	37	94
HGSC 240: 16	17				38	40	37	94
HGSC 240: B	-				38	40	37	94
HGSC 300: 12	13	300	23.5	30.0	43	44	42	101
HGSC 300: 14	14.5				43	44	42	101
HGSC 300: 16	17				43	44	42	101
HGSC 300: 20	21				43	44	42	101
HGSC 400: 13	14.5	400	28.5	36.5	52.5	52	44	114
HGSC 400: 14	17				52.5	52	44	114
HGSC 400: 16	21				52.5	52	44	114
HGSC 400: B	-				52.5	52	44	114
HGSC 500: 14	14.5	500	30.0	39.0	56	56	48	129
HGSC 500-16	17				56	56	48	129
HGSC 500-20	21				56	56	48	129
HGSC 500-B	-				56	66	58	148
HGSC 630:16	17	630	35.0	45.0	64	66	58	148
HGSC 630:20	21				64	66	58	148
HGSC 630:B	-				64	66	58	148
HGSC6 30:16	17	630-light	35.0	41.5	61	56	70	144
HGSC 630: 20	21				61	56	70	144
HGSC 630:B	--				61	56	70	144
HGSC 800:16	17	800	39.0	50.6	72	..	78	170
HGSC 800:20	21				72	..	90	170
HGSC 800:B	--				72	..	..	170
HGSC 1000:B	--	1000	43.0	56.2	78.5	..	..	200
HGSC 1200-B	--	1200	47.0	61.0	85	..	..	230

(All Dimensions in mm)